



MONTHLY MEMBERSHIP PROGRESS REPORT

District 25 E

Results as of: 5/31/2017

GMT: THOMAS MATNEY

LOCATION INDIANA

GMT CA

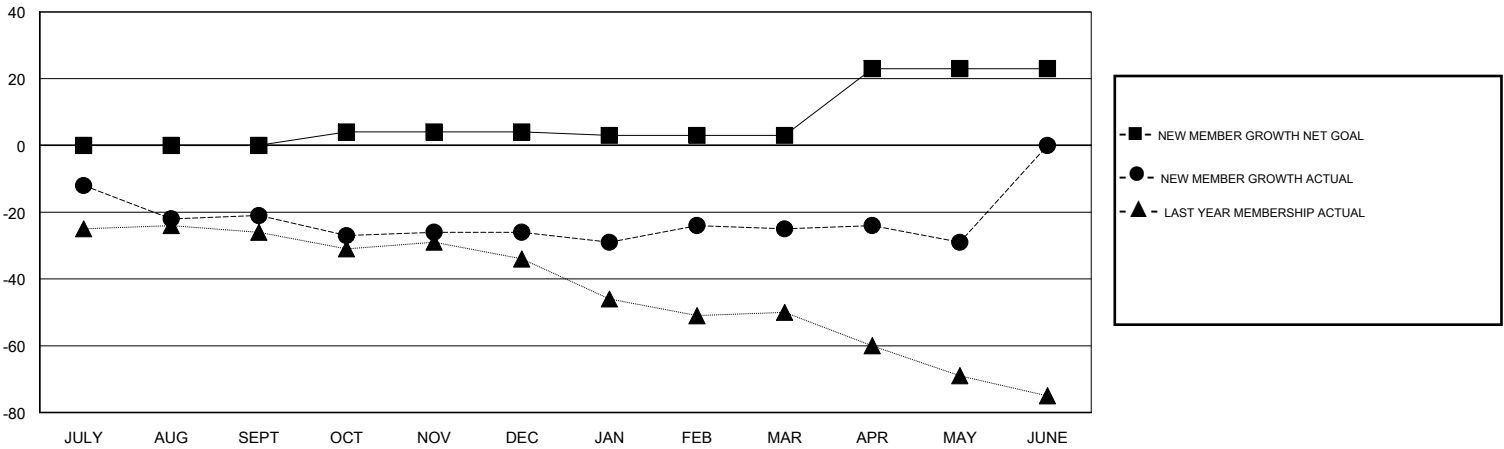
Clubs			
RESULTS FOR 2016-2017			
QUARTER	NEW CLUB GOAL	NEW CLUBS	DROPPED CLUBS
JULY/AUG/SEPT	0	0	0
OCT/NOV/DEC	0	0	0
JAN/FEB/MAR	0	0	0
APR/MAY/JUNE	1	0	0

Members			
RESULTS FOR 2016-2017			
QUARTER	NEW MEMBER GROWTH NET GOAL (not reinstated or transfers)	NEW MEMBER GROWTH ACTUAL (not reinstated or transfers)	DROPPED MEMBERS ACTUAL (including transfers)
JULY/AUG/SEPT	0	25	46
OCT/NOV/DEC	4	25	30
JAN/FEB/MAR	-1	30	29
APR/MAY/JUNE	20	16	20

GOALS AND ACTUAL NEW CLUBS CUMULATIVE



GOALS AND ACTUAL MEMBERS CUMULATIVE



DROPPED CLUBS: 0	34 CLUBS OF 65 ADDED 1 OR MORE NEW MEMBERS	<u>GENDER DISTRIBUTION</u>	
DROPPED MEMBERS		MALE	987 (65.02%)
DECEASED	19	FEMALE	531 (34.98%)
CLUB CANCELLED	0	TOTAL FAMILY UNIT MEMBERS	540
OTHER	106	FAMILY MEMBERS PAYING HALF DUES	277
TOTAL	125		

[CLICK HERE FOR CUMULATIVE MEMBERSHIP DATA](#)